

Evidence of Performance

Testing the joint characteristics of a sealing system between window and building structure in new condition, and after simulated short-term exposures

Test Report

No. 14-001438-PR02

(PB-E03-020310-en-02)



Client	MOLL bauökologische Produkte GmbH Rheintalstr. 35-43 68723 Schwetzingen Germany
Product	Sealing system between window and building structure
Designation	Internal seal: Joint sealing tape CONTEGA SL ^① and multi-purpose joint adhesive glue ORCON [®] F ^② External seal: Joint sealing tape CONTEGA EXO ^③ and multi-purpose joint adhesive glue ORCON [®] F ^②
Installation position / Boundary condition	Hollow block wall with square reveal Timber window IV68, installed in centre of wall reveal Fixing to building structure on sides using frame anchors without plugs. Fasteners spaced on sides ≤ 700 mm. Dead load is transmitted by setting blocks at bottom. Securing position on sides by frame anchors without plugs. External and internal seals provided by joint sealing films. No joint filling provided. Processing as specified by client.
Scope	Airtight internal and watertight external joints between external wall and window and/or casement doors made of timber, of equivalent design, as described above.
Special features	^{*)} No measureable air flow.

Results

Air permeability at up to ± 1000 Pa in new condition

$$a < 0.1 \text{ m}^3/[\text{m h (daPa)}^{2/3}]^{*})$$

Watertightness at up to 600 Pa in new condition

no water penetration



Air permeability at up to ± 1000 Pa after simulated short-term exposures (temperature, wind, operation)

$$a < 0,1 \text{ m}^3/[\text{m h (daPa)}^{2/3}]^{*})$$

Watertightness at up to 600 Pa after simulated short-term exposures (temperature, wind)

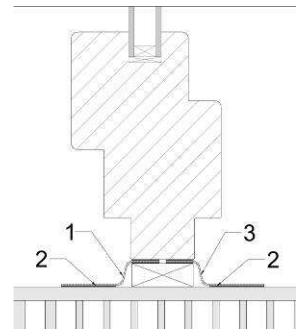
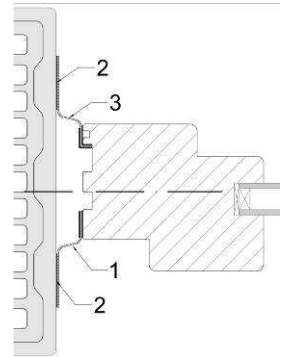
no water penetration

Basis:

Ift Guideline MO-01/1 : 2007-01
Wall connection of windows,
Part 1: Determination of the suitability of use of sealing systems, Clause 5, Testing joint characteristics

Test report 14-001438-PR02 (PB-E03-020310-de-02) dated 26.02.2016

Representation



Instructions for use

This test report serves to demonstrate the above characteristics.

Validity

The data and results refer solely to the tested and described specimen.

Notes on publication

The ift-Guidance Sheet "Advertising with ift test documents" applies.
The cover sheet can be used as an abstract.

Contents

The report contains a total of 27 pages.

ift Rosenheim

25.04.2016

Thomas Stefan, Dipl.-Ing. (FH)
Head of Testing Department
Construction Product Testing

Thomas Krichbaumer
Operating Testing Officer
Construction Product Testing